

NORTH-WEST QUARTER

# CLARIDON TP.

NORTH-WEST QUARTER

CHARDON TP.

H A M B D E N T P.

OL. #7 #1 251-173 D.N. Ralston  
 " 4 2 257-319 C. Meyer Jr. et al 1A  
 " 4 3 257-405 C. Meyer Sr. et al 1A

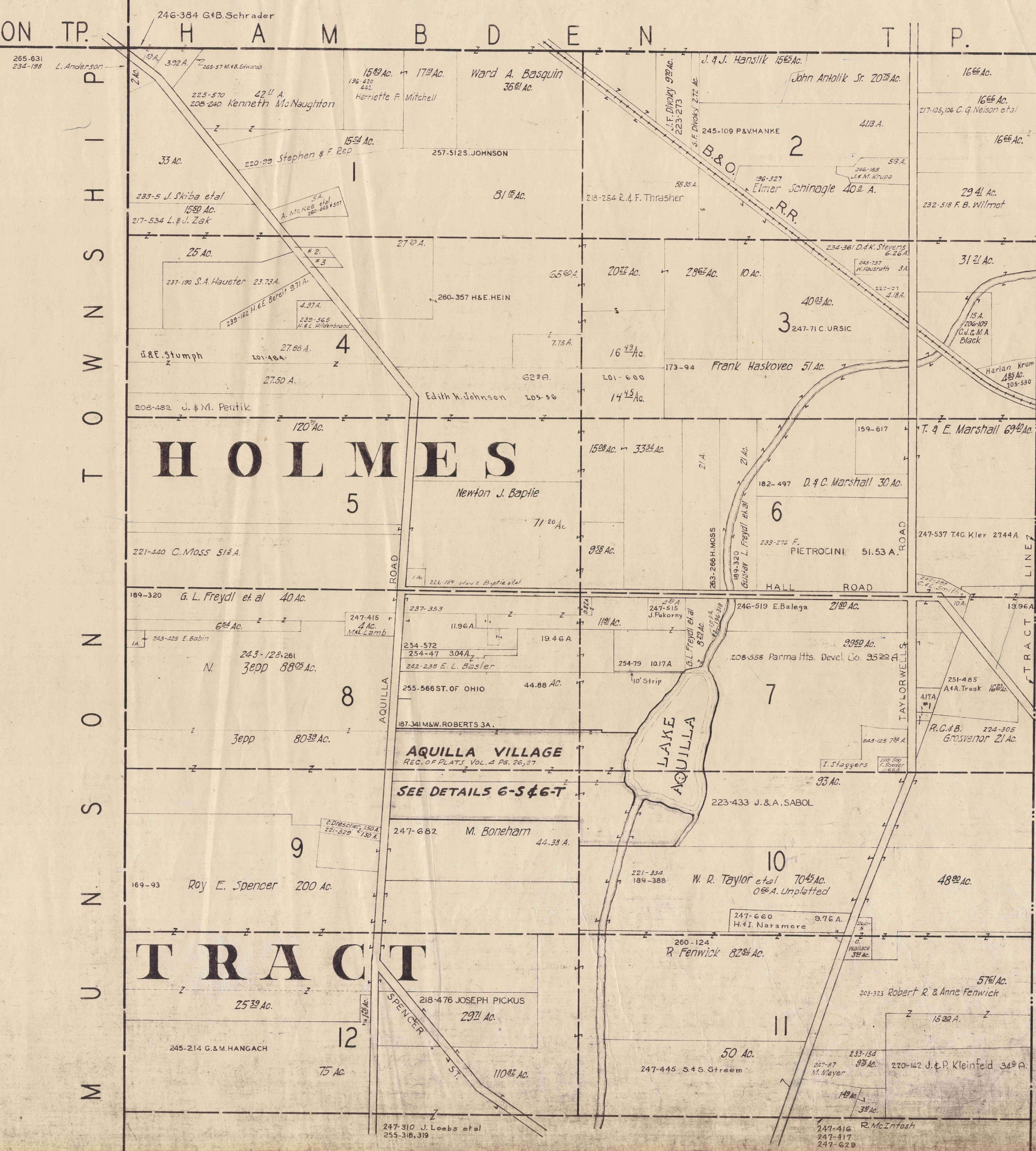
T O W N S H I P

S U R V E Y

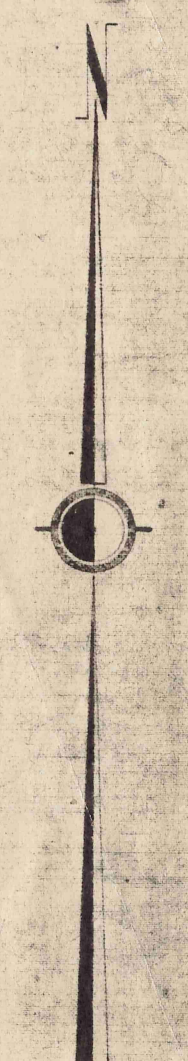
## H O L M E S

## T R A C T

L A K E A Q U I L L A



69.40  
 9.07  
 60.33



SCALE 1IN.=100'

JAN. 1, 1955

6 N.W.

NORTH-EAST  
QUARTER

# CLARIDON TWP.

NORTH-EAST  
QUARTER

H A M B D E N T O W N S H I P MONTVILLE

#51. Lot 1 Sec 1 R.D. Warner 257-62 1.1A.  
#52. " 2 " 6 K.M. Post 255-499 1.495A.  
#53. " 2 " 6 G. Meyer 255-499 1.50A.

H O L M E S T R A C T L I N E 7



P  
T  
R  
G  
U  
S  
B  
T  
N  
U  
H

SCALE 1 in. = 10 CH.

JAN. 1, 1955

6 N.E.

SOUTH-WEST QUARTER

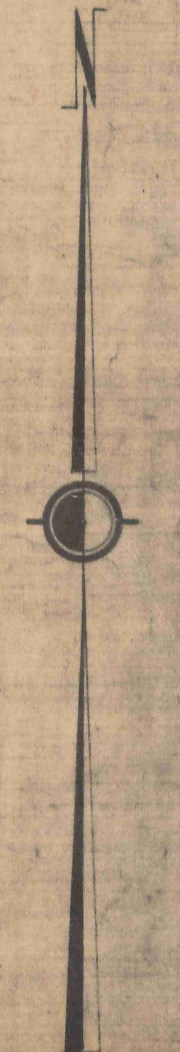
CLARIDON T.P.

SOUTH-WEST QUARTER

P  
H  
S  
N  
T  
O  
W  
N  
S  
H  
I  
P



- #1 246-478 I.M. Gurer 1A. Lot 8
- #2 255-178 H. Coe 1A. " 18
- #3 268-485 M. DURHAM " 14 & 15
- #4 265-203 D. & L. Pirzane " 15
- #5 " - 205 " " 15
- #6 " - 291 " " 15
- #7 " - 289 N. Neidenbach " 15



SCALE 1 in. = 10 ch.  
 1956, 1958  
 JAN. 1, 1955

NEWBURY T.P. B U R T O N T O W N S H I P 6 SW

SOUTH-EAST QUARTER

# CLARIDON TP.

SOUTH-EAST QUARTER

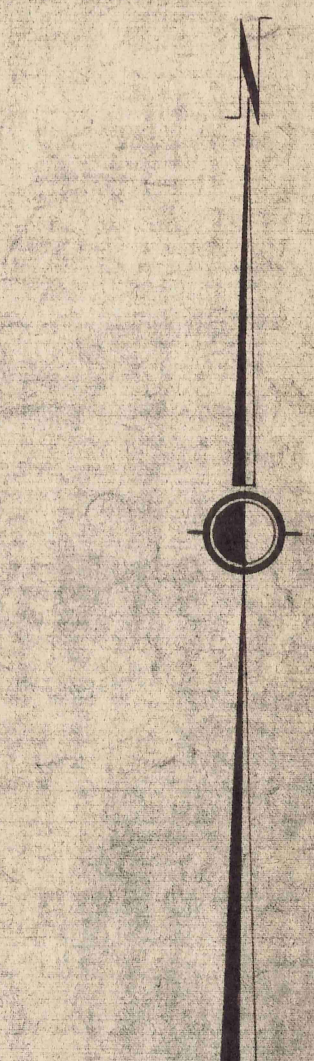


FENWICK SURVEY  
 S.L.# 1.  
 2. 257-528 H.A. Linden  
 3.  
 4.  
 5.  
 6.  
 7.  
 8.  
 9. 257-527 G.M. Wallman

U.S.  
322

#1 251-53 C.M. Church 0.72 A. O.L. 2 Sec 12  
 #1 251-163 E.B. Valvoda 2.50 A. " 1 " 11  
 #2 257-420 K.L. Thron 1.25 A. " 3 " 8  
 #3 257-1 S.E. Mohl 1.24 A. " 3 " 6  
 #4 251-156 E.H. Buell 1.24 A. " 3 " 8  
 #5 247-367 K.Kronk 1.50 A. " 3 " 8  
 #6 247-367 K.Kronk 1.07 A. " 3 " 8  
 #7 247-367 K.Kronk 1.50 A. " 3 " 8  
 #8 251-229 T.R. Siwinski " 3 " 8  
 #9 257-57 " " 3 " 8

U.S.  
322



SCALE 1 in. = 10 ch.

JAN. 1, 1955

6 S.E.

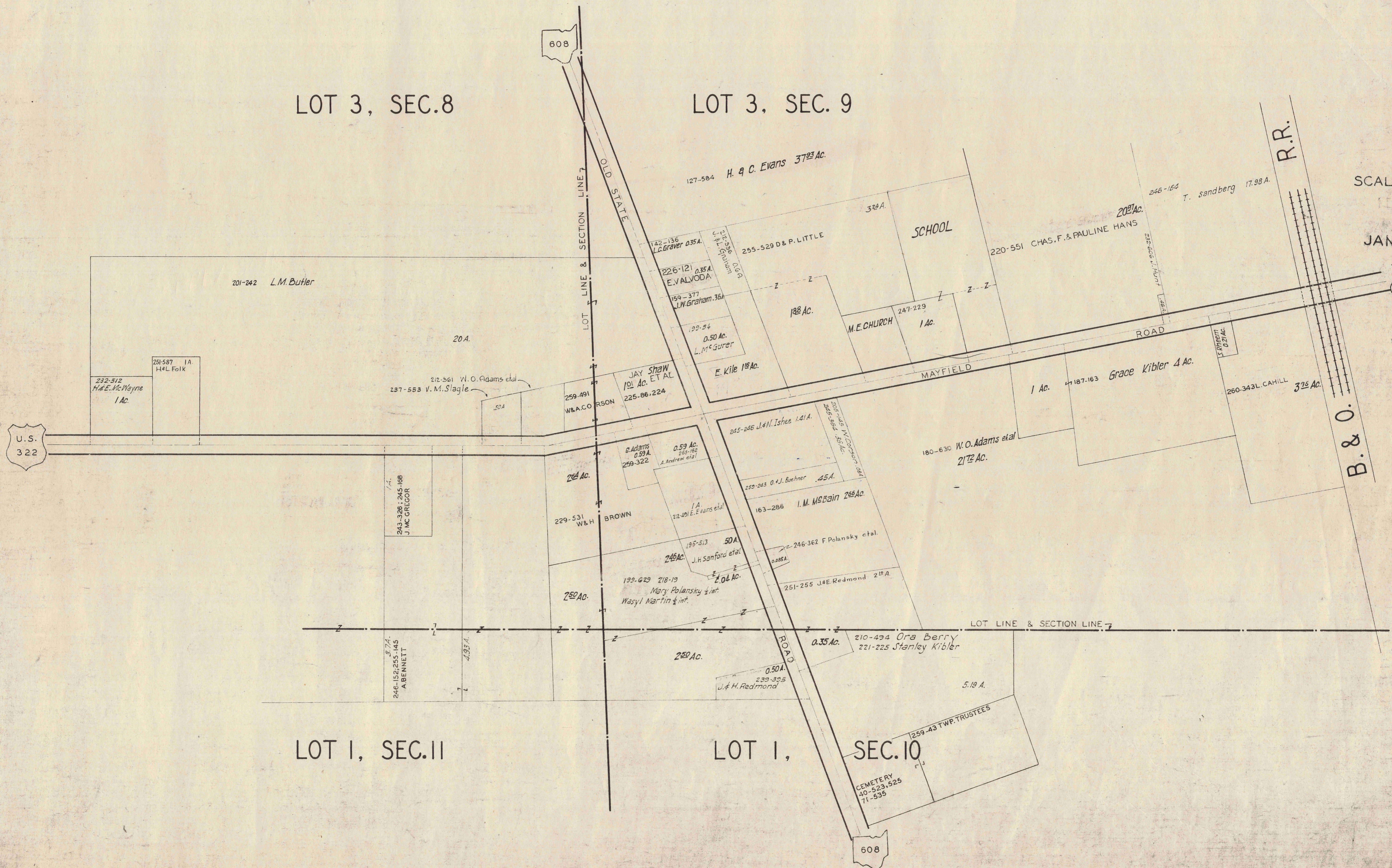
B U R T O W N S H I P MIDDLEFIELD TP.



EAST CLARIDON  
AND VICINITY

# CLARIDON TP.

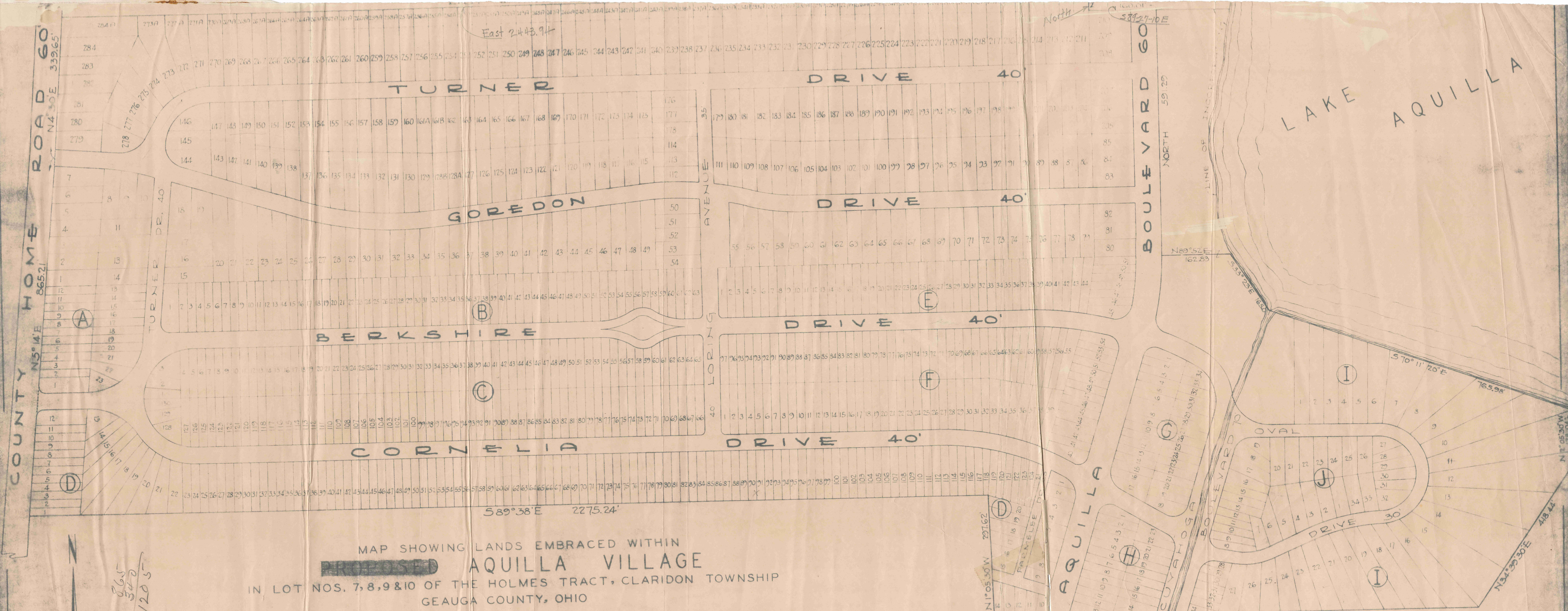
EAST CLARIDON  
AND VICINITY



SCALE 1 IN. = 25 CH. = 165'

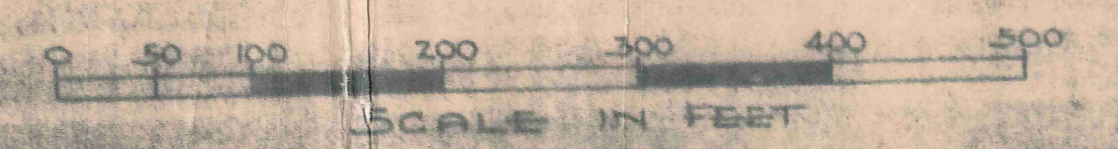
JAN. 1, 1955





MAP SHOWING LANDS EMBRACED WITHIN  
**PROPOSED LAKE AQUILLA VILLAGE**  
 IN LOT NOS. 7, 8, 9 & 10 OF THE HOLMES TRACT, CLARIDON TOWNSHIP  
 GEauga COUNTY, OHIO

BEING ALL OF THE TUXEDO LAND COMPANY'S LAKE AQUILLA SUBDIVISION No. 1, VOL. 1 Pgs. 51 AND 52 OF GEAGA COUNTY RECORDS OF PLATS, ALL OF A PROPOSED ADDITION TO SAID LAKE AQUILLA SUBDIVISION No. 1 AND ALL OF THE LAKE AQUILLA ESTATES COMPANY'S SUBDIVISION No. 1, VOL. 2 Pgs. 6, 7, 8, 9, 10, 11 AND 12 OF GEAGA COUNTY RECORDS OF PLATS TOGETHER WITH RESUBDIVISIONS OF THE SAME, VOL. 2 Pgs. 19 AND 33 OF GEAGA COUNTY RECORDS OF PLATS, EXCEPT THAT AREA OF THE ABOVE WITHIN THE RIGHT OF WAY OF COUNTY HOME ROAD.



is line between TUXEDO LAND COMPANY'S LAKE AQUILLA SUBDIVISION No. 1 and LAKE AQUILLA ESTATES COMPANY'S SUBDIVISION No. 1.  
 is line between TUXEDO LAND COMPANY'S LAKE AQUILLA SUBDIVISION No. 1 and proposed ADDITION thereto.

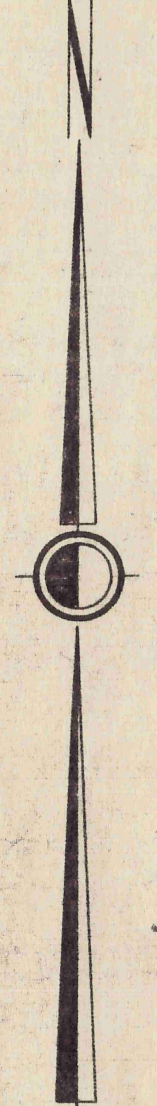
Distances are in feet and decimal parts thereof. Bearings are assumed to indicate actual included angles. All of which I verily believe to be correct.

J. C. Emery March 4 1946 CHARDON, OHIO

865  
 340  
 1205



SCALE 1 IN. = 30 FT.



SEE 6 - S - WEST

31	257-105 V&F CLARKE	.091 A.
32	220-356 W.H. TAYLOR ETAL	.117 A.
	224-503 B WEEKS	.116 A.
33	224-479 E RICHARDS 255-53	.114 A.
34	201-458 B. WEEKS	.108 A.
35	169-241 M. HOUDEK	.109 A.
	161 B	.109 A.
36	165-155 L. GRISWOLD	.107 A.
	234-132 M&M SMITH	.108 A.
37	217-206 L.J. HENRY	.105 A.
38	169-372	.104 A.
	164	.105 A.
39	182-329	.102 A.
	165	.104 A.
40		.101 A.
	166	.102 A.
41	174-92 E. DAIGEN	.112 A.
	246-245 H. GENCOPPE	.123
42	179-346 M. MCGREGOR	.115 A.
43	C. ANDREWS 233-497	.118 A.
44	178-134 E.J. BOYD	.120 A.
45	C. ANDREWS	.123 A.
46	245-317 O.W. SMITH	.125 A.
47	246-76 WEYLS ENT.CO.	.128 A.
48	246-339 L&M FRGIC	.131 A.
49	232-95 R.D. WOLFE	.134 A.
50		.085 A.
51	257-186 W&M ANDERSON	.079 A.
52	224-161 F.O. & M.V. GREENE	.079 A.
53		.079 A.
54		.079 A.
55	177-582 AQUILLA LAKE COMMUNITY, INC.	.122 A.
56	242-277 W&A HENDERSON	.116 A.

LAKE AQUILLA SUBDIVISION NO 1 & LAKE AQUILLA SUBDIVISION NO1 ADDITION  
VOL. 1 PGS 50 & 51 REC OF PLATS VOL. 4 PGS 23 & 24 REC OF PLATS

NOW AQUILLA VILLAGE VOL. 4 PAGES 26-27 REC. OF PLATS  
JAN. 1, 1955

132	220-356 W.H. TAYLOR ETAL	.117 A.
131	224-503 B WEEKS	.116 A.
130	224-479 E RICHARDS 255-53	.114 A.
129	201-458 B. WEEKS	.108 A.
128 B	169-241 M. HOUDEK	.109 A.
	161 B	.109 A.
128 A	165-155 L. GRISWOLD	.107 A.
	234-132 M&M SMITH	.108 A.
127	217-206 L.J. HENRY	.105 A.
126	169-372	.104 A.
	164	.105 A.
125	182-329	.102 A.
	165	.104 A.
124		.101 A.
	166	.102 A.
123	246-245 H. GENCOPPE	.123
122	220-101 D.&B. LAWSON	.098 A.
	168	.099 A.
121	245-338 H&J SENDER	.097 A.
	169	.098 A.
120		.095 A.
	170	.097 A.
119		.094 A.
	171	.095 A.
118	157-39 R.E. & A. T. SPENCER	.093 A.
	172	.095 A.
117		.091 A.
	173	.093 A.
116	H. SKINNER 233-583	.090 A.
	174	.091 A.
115		.088 A.
	175	.090 A.
114	220-301 H. CALDWELL	.087 A.
	176	.096 A.
113	259-67 MVEVERKA	.087 A.
	177	.086 A.
112		.092 A.
	178	.086 A.
111	251-564 N&M Huranna	.091 A.
	179	.093 A.
110	222-6-551 E. & C. HOFFMAN	.094 A.
	180	.096 A.
109		.098 A.
	181	.098 A.

GOREDON DRIVE

DRIVE

40'

259	223-543	.104 A.
258	167-361 E. H. LARAWAY	.104 A.
257	A & L GILSON	.105 A.
256	229-226 G & A. BARNES	.105 A.
255		.105 A.
254	232-410 E & J. DILDA	.105 A.
253		.106 A.
252	254-156 J. IFFH	.106 A.
251		.107 A.
250	218-412 L. & D. JOHNSON	.107 A.
249	224-496	.108 A.
248	W. & E. KAIL	.108 A.
247	163-510 W. E. PITTS	.108 A.
246	157-66 R. S. MCINTOSH	.109 A.
245	224-526 C. & M. MEYER	.109 A.
244		.110 A.
243	246-173 W. IVANS	.110 A.
242	213-269 D. & L. RICHARDS	.110 A.
241		.110 A.
240	203-73 S. SIEGEL	.111 A.
239		.111 A.
238	193-426 S. SIEGEL	.111 A.
237	257-393 LEB. DAY	.108 A.
236		.108 A.
235	213-487 V. A. BECKWITH	.107 A.
234	234-14 R. & D. BEST	.107 A.

TURNER DRIVE

DRIVE

40'

LORING AVENUE

LORING AVENUE

111	251-564 N&M Huranna	.091 A.
110	222-6-551 E. & C. HOFFMAN	.094 A.
109		.098 A.
	181	.098 A.

55	177-582 AQUILLA LAKE COMMUNITY, INC.	.122 A.
56	242-277 W&A HENDERSON	.116 A.

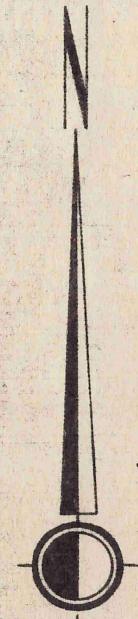
PARK

6-S CTR.

SEE 6 - S - EAST

SCALE 1"=30 FT.

SEE 6-S-CTR.



57	251-235 O.CREIGHTON ETAL	.110A.
58	251-259 M.S.MAZUR	.106A.
59	165-321 A. DOUBLER	.104A.
60	179-381 J.B.&L. CHAPARD	.103A.
61	174-182 D.K. WHITNEY	.103A.
62	221-526 H. HENDERSHOT	.103A.
63	254-19 J. Ramsey	.103A.
64	232-268	.103A.
65	165-462 J.J. ZEMA, ETAL	.103A.
66	246-88 V&D DENNING	.103A.
67	246-87	.103A.
68	217-612 E.H. SCHRAD	.103A.
69		.103A.
70	242-345 W&B PARR	.102A.
71		.102A.
72	259-419	.102A.
73	157-26 A.A. CAIN 218-414	.102A.
74	192-15 A.A. CAIN	.102A.
75	169-207 F.J. IRWIN	.102A.
76	192-600 H.G. & H.M. HECKER	.102A.
77	165-364 F.L. & P. BAUMGARTNER	.102A.
78	259-519 H. HAIRE	.102A.
79		.102A.

GOREDON DRIVE

DRIVE

40'

108	254-474 C&M WHITE	.100A.
107	265-463	.102A.
182	174-382 L.J. & A.L. EDE	.104A.
183	259-264 E&B MC PADDEN	.104A.
184	163-13 C.B. COVERT	.104A.
185	167-151 F.&E. SIEBERT	.104A.
186		.104A.
187	248-197 H. GAINES	.104A.
188		.104A.
189		.104A.
190	221-331	.104A.
191	245-616 J.&N. DEMKO	.104A.
192		.104A.
193		.104A.
194	246-518 M.&M. PETAK	.104A.
195	247-281 A. PETAK ET AL	.104A.
196	265-425 L.&V. SHEEHE	.104A.
197	229-320 T&M WEICHEL	.104A.
198	196-473	.104A.
199		.104A.
200	257-503 R&D. RODE	.104A.
201		.104A.
202	217-614 H. PILDNER	.104A.
203		.052A.
204		.104A.

TURNER DRIVE

DRIVE

40'

233	234-14 R&D. BEST	.107A.
232	245-303 A. KANATSKY	.107A.
231		.106A.
230	213-614 C.&F. SRAIL	.106A.
229	245-323 C.&K. MARTIN	.106A.
228	255-247 I.M.C. GURER	.105A.
227	237-417 R.&F. MORELAND	.105A.
226		.105A.
225	189-290 P. VANDELLEN	.105A.
224	239-67	.104A.
223	259-222 J.&K. BUNDZA	.104A.
222		.104A.
221		.104A.
220	192-379 O. LUNZ 218-528	.103A.
219	179-220	.103A.
218	189-7	.051A.
217		.103A.
216	257-122 J.H. WHITE	.102A.
215		.102A.
214	165-354 F.P. TRAVERSE	.102A.
213	265-109 L&R. TARANTINO	.101A.
212	251-241 S.&J. CENTA	.101A.
211	245-599 S.&J. CENTA	.101A.

80	D.A. LOFTUS	.092A.
81	220-145 H. & J. V. HAIRE	.092A.
82	218-456 K. & H. STAGE	.103A.
83	234-618 W.&D. HENDERSHOT	.115A.
84	233-249 L. ZINNER	.092A.
85		.092A.
205	188-229 AQUILLA LAKE COM.	.092A.
206	247-435 C. KOVACH	.092A.
207	255-136 O. Anderson ETAL	.105A.
208		.103A.
209	242-184 R. DEVECKI	.092A.
210	212-324 LAKE AQUILLA COM.	.093A.

AQUILLA BOULEVARD

AQUILLA VILLAGE VOL. 4, PAGES 26-27 REC. OF PLATS  
 FORMERLY  
 LAKE AQUILLA ESTATES COMPANY'S SUBDIVISION NO. 1

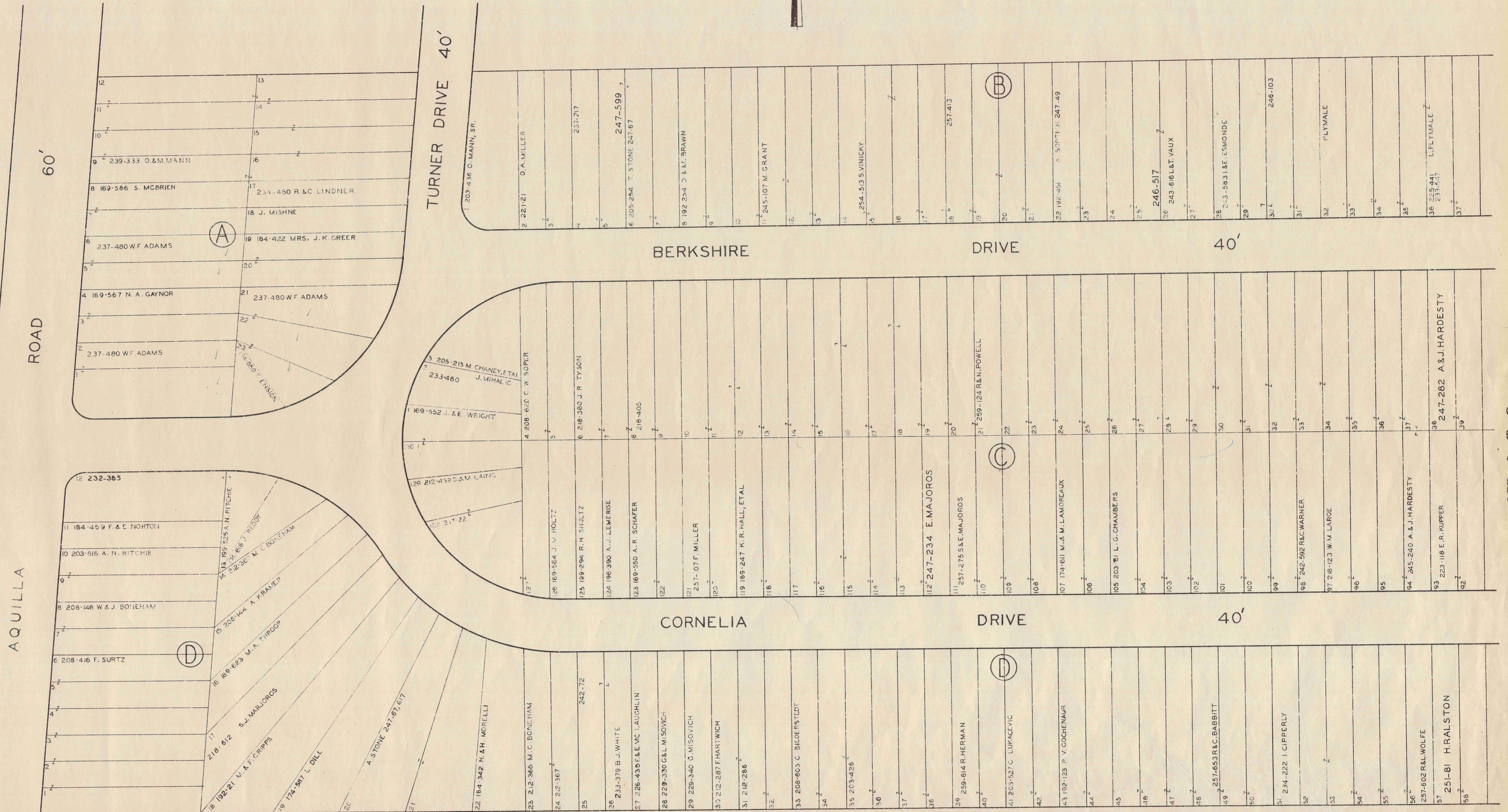
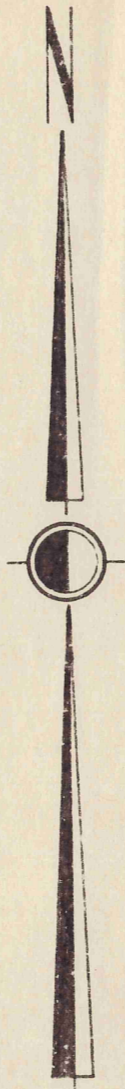
AND RESUBDIVISION OF BLOCKS I & J AND SUBLOTS  
 NOS. 125 TO 141 INCLUSIVE IN BLOCK D

PART OF ORIGINAL LOT NOS. 9 & 10 OF THE HOLMES TRACT CLARIDON TOWNSHIP

VOL. 2 PAGES 6, 7, 8, 9, 10, 11, 12, 19 & 33 REC. OF PLATS

SCALE 1 INCH = 40 FEET

JAN. 1, 1955



SEE 6-T-2

AQUILLA VILLAGE VOL. 4, PAGES 26-27 REC. OF PLATS  
FORMERLY  
LAKE AQUILLA ESTATES COMPANY'S SUBDIVISION NO. 1

AND RESUBDIVISION OF BLOCKS I & J AND SUBLOTS  
NOS. 125 TO 141 INCLUSIVE IN BLOCK D

PART OF ORIGINAL LOT NOS. 9 & 10 OF THE HOLMES TRACT

CLARIDON TOWNSHIP

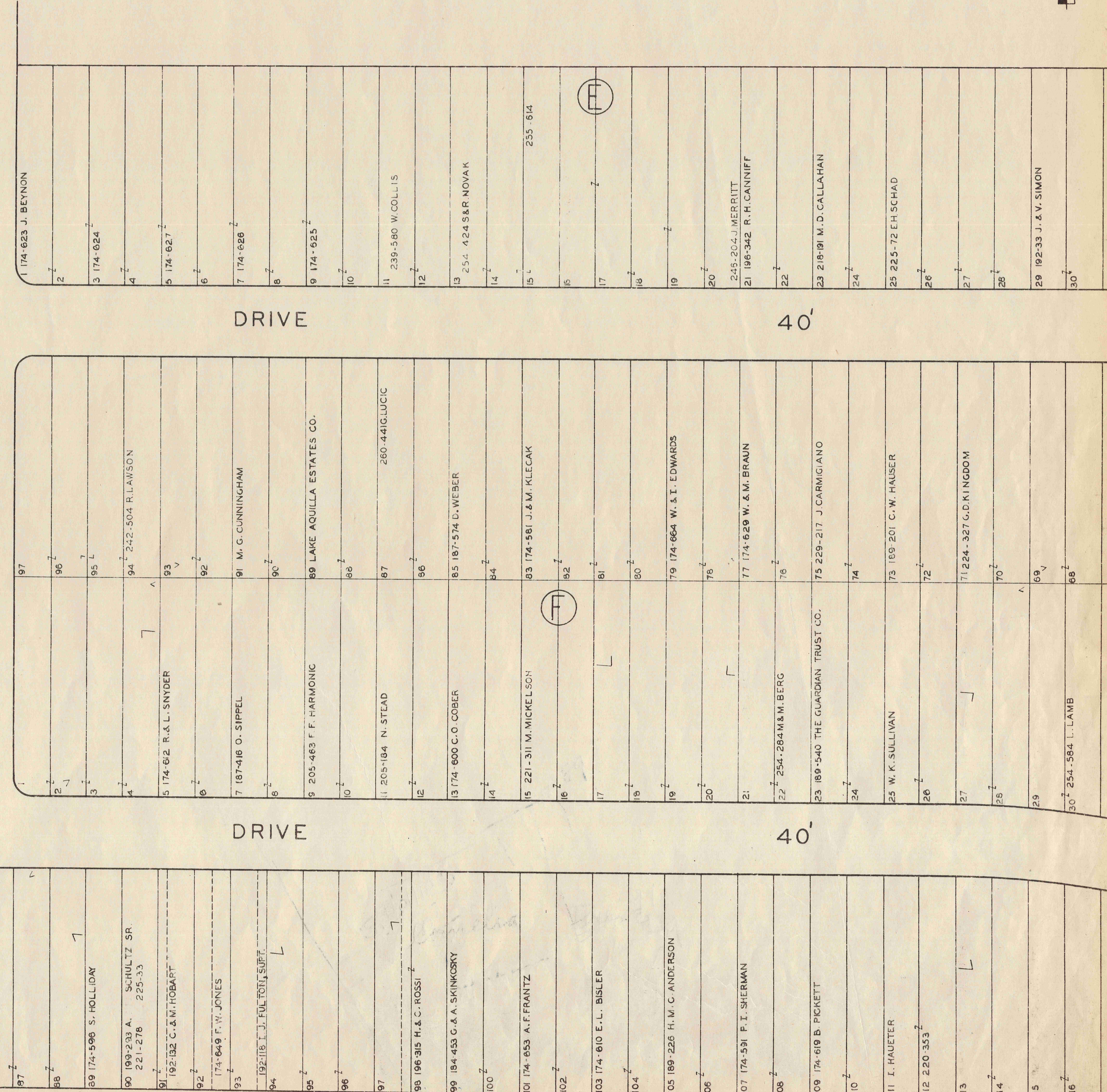
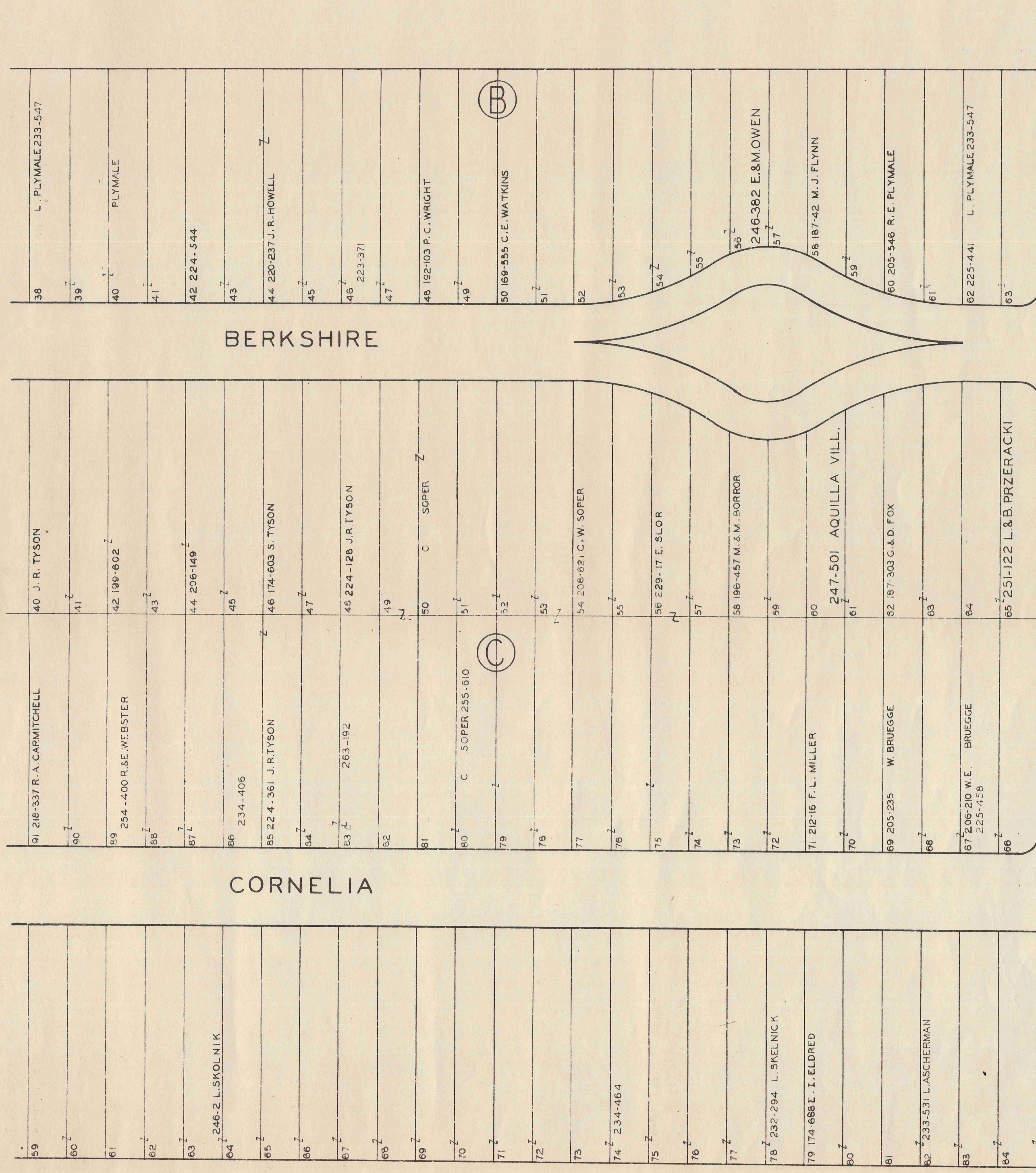
VOL. 2 PAGES 6, 7, 8, 9, 10, 11, 12, 19 & 33 REC. OF PLATS

SCALE 1 INCH = 40 FEET

JAN. 1, 1955



SEE 6-T-1



6-T-2

SEE 6-T-3

SEE 6-T-2

SEE 6-T-4



AQUILLA VILLAGE VOL. 4 PAGES 26-27 REC. OF PLATS  
 FORMERLY  
 LAKE AQUILLA ESTATES COMPANY'S SUBDIVISION NO. 1

AND RESUBDIVISION OF BLOCKS I & J AND SUBLOTS  
 NOS. 125 TO 141 INCLUSIVE IN BLOCK D  
 PART OF ORIGINAL LOT NOS. 9 & 10 OF THE HOLMES TRACT CLARIDON TOWNSHIP

VOL. 2 PAGES 6, 7, 8, 9, 10, 11, 12, 19 & 33 REC. OF PLATS

SCALE 1 INCH = 40 FEET

JAN. 1, 1955

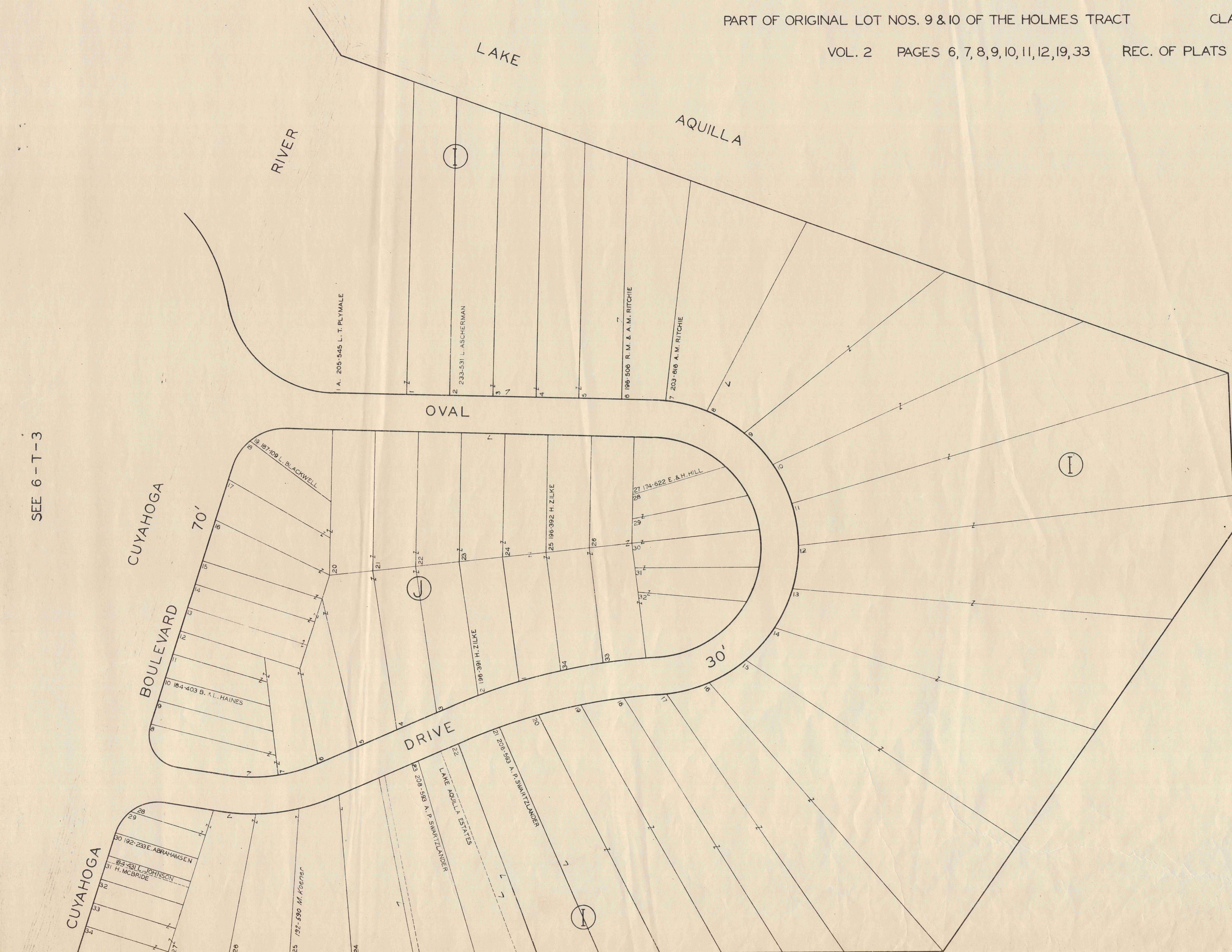
AQUILLA VILLAGE VOL. 4 PAGES 26-27 REC. OF PLATS  
FORMERLY  
LAKE AQUILLA ESTATES COMPANY'S SUBDIVISION NO. 1

AND RESUBDIVISION OF BLOCKS I & J AND SUBLOTS  
NOS. 125 TO 141 INCLUSIVE IN BLOCK D

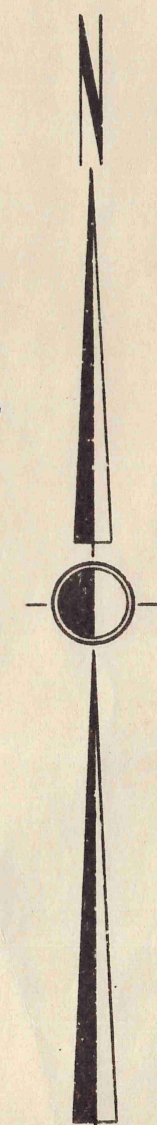
PART OF ORIGINAL LOT NOS. 9 & 10 OF THE HOLMES TRACT

CLARIDON TOWNSHIP

VOL. 2 PAGES 6, 7, 8, 9, 10, 11, 12, 19, 33 REC. OF PLATS



SEE 6-T-3



SCALE 1 INCH = 40 FEET

JAN. 1, 1955